

\$547,900 - 166 Stonehouse Way, Leduc

MLS® #E4416858

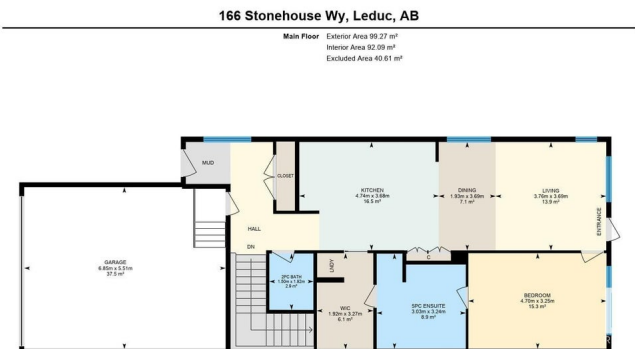
\$547,900

1 Bedroom, 1.50 Bathroom, 1,060 sqft
Single Family on 0.00 Acres

Southfork, Leduc, AB

Jayman BUILT is offering an exciting opportunity to purchase a BUNGALOW style duplex with attached garage in a fantastic community with schools and parks close by! This model is the 'Parker' half duplex - NO CONDO FEES! Main floor is spacious and open; great room design with a dining area and the kitchen has quartz counter tops, stainless steel appliances, pantry and an island with flush eating bar. The owners suite is generous sized with a luxurious ensuite and walk-in closet with access to the laundry room. A covered veranda with glass railings gives comfortable out door living space. The basement development pricing and plans are available on request. With Jayman's Core performance features - solar panels, triple pane windows, tankless hot water system, high efficiency furnace & HRV and Smart Home technology, you'll love living here! A stunning home that offers great features!

Built in 2024



Essential Information

MLS® #	E4416858
Price	\$547,900
Bedrooms	1
Bathrooms	1.50
Full Baths	1

Half Baths	1
Square Footage	1,060
Acres	0.00
Year Built	2024
Type	Single Family
Sub-Type	Half Duplex
Style	Bungalow
Status	Active

Community Information

Address	166 Stonehouse Way
Area	Leduc
Subdivision	Southfork
City	Leduc
County	ALBERTA
Province	AB
Postal Code	T9E 1R2

Amenities

Amenities	Ceiling 9 ft.
Parking	Double Garage Attached

Interior

Interior Features	ensuite bathroom
Appliances	Dishwasher-Built-In, Hood Fan, Oven-Microwave, Refrigerator, Stove-Electric
Heating	Forced Air-1, Natural Gas
Stories	1
Has Basement	Yes
Basement	Full, Unfinished

Exterior

Exterior	Wood, Vinyl
Exterior Features	Back Lane
Roof	Asphalt Shingles
Construction	Wood, Vinyl
Foundation	Concrete Perimeter

Additional Information

Date Listed January 2nd, 2025

Days on Market 107

Zoning Zone 81

DATA IS DEEMED RELIABLE BUT IS NOT GUARANTEED ACCURATE BY THE REALTORS® ASSOCIATION OF EDMONTON. COPYRIGHT 2025 BY THE REALTORS® ASSOCIATION OF EDMONTON. ALL RIGHTS RESERVED. Trademarks are owned or controlled by the Canadian Real Estate Association (CREA) and identify real estate professionals who are members of CREA (REALTOR®, REALTORS®) and/or the quality of services they provide (MLS®, Multiple Listing Service®)

Listing information last updated on April 19th, 2025 at 1:47pm MDT