

\$649,900 - 10648 67 Avenue, Edmonton

MLS® #E4418715

\$649,900

5 Bedroom, 4.00 Bathroom, 1,825 sqft

Single Family on 0.00 Acres

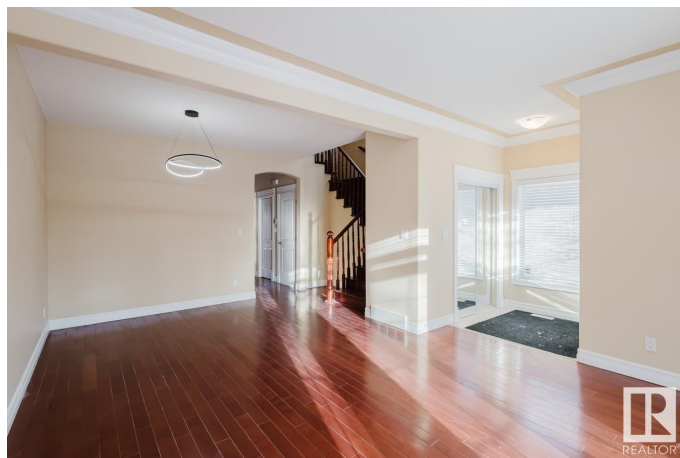
Allendale, Edmonton, AB

DUPLEX with SEPARATE ENTRANCE in UNIVERSITY area. Checkout this 5 beds+ 1 den with 1800+ sqft duplex in Allendale which features natural stone and stucco exterior with elegant and consistent finishes. Hardwood floor throughout the home. The main level has bright and spacious south facing living room with large bay windows. Gourmet kitchen with upgraded granite countertop and SS appliances. A main floor bedroom and a full bath. Upper level will see a primary bedroom with walk-in closet and 4 pc ensuite, two other beds, a 4pc bath and laundry room. Fully finished basement adds a living room, a guest bedroom, a den and a full bath. BASEMENT has SEPARATE ENTRANCE to the side. Fenced backyard with deck and double garage. Close to U of A, schools, grocery and LRT and Shopping. Can not miss!

Built in 2009

Essential Information

MLS® #	E4418715
Price	\$649,900
Bedrooms	5
Bathrooms	4.00
Full Baths	4
Square Footage	1,825
Acres	0.00



Year Built	2009
Type	Single Family
Sub-Type	Half Duplex
Style	2 Storey
Status	Active

Community Information

Address	10648 67 Avenue
Area	Edmonton
Subdivision	Allendale
City	Edmonton
County	ALBERTA
Province	AB
Postal Code	T6H 1Z8

Amenities

Amenities	Ceiling 9 ft., Deck, Detectors Smoke, See Remarks
Parking	Double Garage Detached

Interior

Interior Features	ensuite bathroom
Appliances	Dishwasher-Built-In, Dryer, Oven-Built-In, Refrigerator, Stove-Electric, Washer
Heating	Forced Air-1, Natural Gas
Stories	3
Has Basement	Yes
Basement	Full, Finished

Exterior

Exterior	Wood, Stone, Stucco
Exterior Features	Fenced, Public Transportation, Schools, Shopping Nearby, See Remarks
Roof	Asphalt Shingles
Construction	Wood, Stone, Stucco
Foundation	Concrete Perimeter

Additional Information

Date Listed	January 21st, 2025
Days on Market	89

Zoning

Zone 15

DATA IS DEEMED RELIABLE BUT IS NOT GUARANTEED ACCURATE BY THE REALTORS® ASSOCIATION OF EDMONTON. COPYRIGHT 2025 BY THE REALTORS® ASSOCIATION OF EDMONTON. ALL RIGHTS RESERVED. Trademarks are owned or controlled by the Canadian Real Estate Association (CREA) and identify real estate professionals who are members of CREA (REALTOR®, REALTORS®) and/or the quality of services they provide (MLS®, Multiple Listing Service®)

Listing information last updated on April 20th, 2025 at 4:17am MDT