

## \$949,000 - 7024 Kiviaq Crescent, Edmonton

MLS® #E4419786

**\$949,000**

5 Bedroom, 4.00 Bathroom, 2,840 sqft

Single Family on 0.00 Acres

Keswick Area, Edmonton, AB

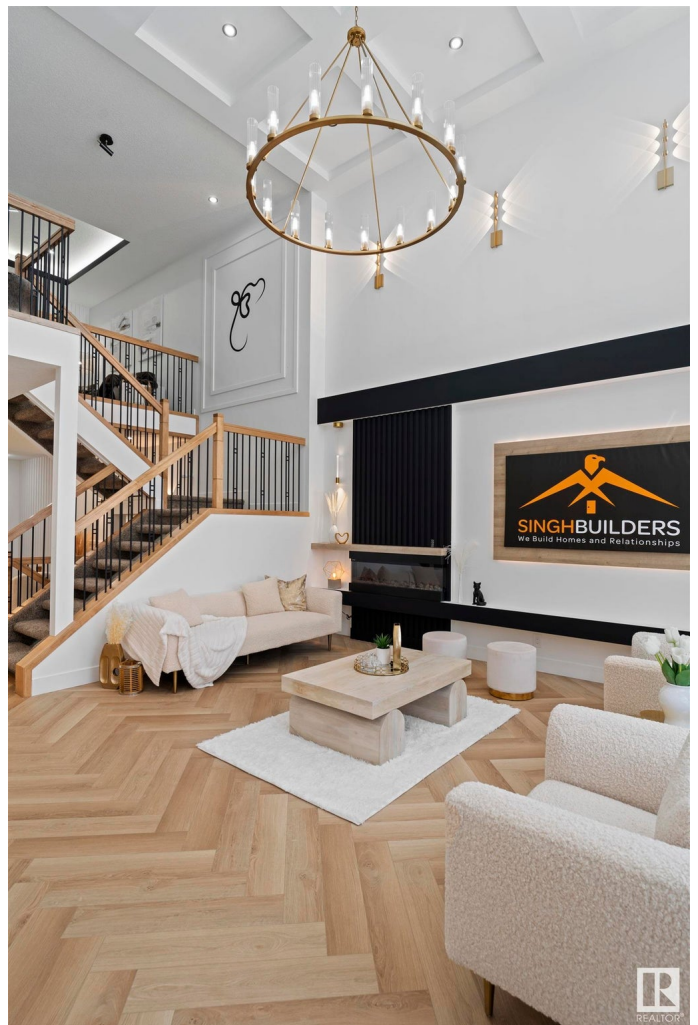
Welcome to Singh Builder's BRAND-NEW GRACE model. This model incorporates the idea of a triple car garage. A very distinctive layout offering 5 bedrooms and 4 full baths. Highlighting this home's excellent characteristics, you walk into unique foyer which lead you to a mudroom, a full bed & a beautifully designed full bath, a GREAT ROOM, warm and welcoming area that perfectly captures the open to below concept, a coffee bar, an electric fireplace, a spacious dining area with a view of the extended kitchen, the walkthrough SPICE KITCHEN that every home needs. A thoughtfully designed second floor offers two Master bedrooms with its own private suites, 2 additional bedrooms with a JACK AND JILL BATHROOM, a bonus room, lovely accent walls that add to its individuality. A side entrance with a potential for further basement suite. Close to major amenities and walking distance to K-9 School. This wonderful home is definitely a must see. Photos of a show home are for reference purpose only.

Built in 2025

### Essential Information

MLS® # E4419786

Price \$949,000



Bedrooms	5
Bathrooms	4.00
Full Baths	4
Square Footage	2,840
Acres	0.00
Year Built	2025
Type	Single Family
Sub-Type	Detached Single Family
Style	2 Storey
Status	Active

### Community Information

Address	7024 Kiviaq Crescent
Area	Edmonton
Subdivision	Keswick Area
City	Edmonton
County	ALBERTA
Province	AB
Postal Code	T6W 5R2

### Amenities

Amenities	Ceiling 9 ft., Closet Organizers, Detectors Smoke, No Animal Home, No Smoking Home, See Remarks, HRV System
Parking	Triple Garage Attached

### Interior

Interior Features	ensuite bathroom
Appliances	Builder Appliance Credit
Heating	Forced Air-1, Natural Gas
Stories	2
Has Basement	Yes
Basement	Full, Unfinished

### Exterior

Exterior	Wood, Vinyl
Exterior Features	Playground Nearby, Schools, Shopping Nearby, See Remarks
Roof	Asphalt Shingles
Construction	Wood, Vinyl
Foundation	Concrete Perimeter

## Additional Information

Date Listed January 30th, 2025  
Days on Market 79  
Zoning Zone 56



DATA IS DEEMED RELIABLE BUT IS NOT GUARANTEED ACCURATE BY THE REALTORS® ASSOCIATION OF EDMONTON. COPYRIGHT 2025 BY THE REALTORS® ASSOCIATION OF EDMONTON. ALL RIGHTS RESERVED. Trademarks are owned or controlled by the Canadian Real Estate Association (CREA) and identify real estate professionals who are members of CREA (REALTOR®, REALTORS®) and/or the quality of services they provide (MLS®, Multiple Listing Service®)

Listing information last updated on April 19th, 2025 at 6:02am MDT