

# \$199,900 - 128 15499 Castle Downs Road, Edmonton

MLS® #E4421316

**\$199,900**

2 Bedroom, 2.00 Bathroom, 1,166 sqft  
Condo / Townhouse on 0.00 Acres

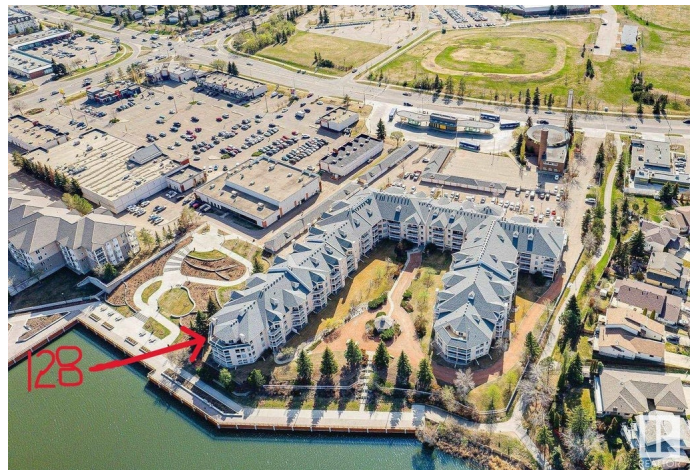
Beaumaris, Edmonton, AB

LAKEFRONT only steps away! Partial LAKE VIEW from your patio! 100 metres to gorgeous trail around Lake Beaumaris. Beside a public park overlooking the lake! Very quiet, private, yet secure grounds. 18+ adult living. Squeaky clean unit has brand-new luxury vinyl plank flooring & new 3-1/4" baseboards in the wide open living, dining, kitchen, office niche, entry areas + the main bath & laundry! Updates include; most lighting; oval door knobs, hinges, striker plates & doorstops; oval bi-fold knobs; kitchen pull down faucet & modern cabinet handles; virtually all brass removed! Gas fireplace; Building features a small swimming pool, exercise room, lounge area, active social club and small library;

Built in 1993

## Essential Information

MLS® #	E4421316
Price	\$199,900
Bedrooms	2
Bathrooms	2.00
Full Baths	2
Square Footage	1,166
Acres	0.00
Year Built	1993
Type	Condo / Townhouse



Sub-Type	Lowrise Apartment
Style	Single Level Apartment
Status	Active

### **Community Information**

Address	128 15499 Castle Downs Road
Area	Edmonton
Subdivision	Beaumaris
City	Edmonton
County	ALBERTA
Province	AB
Postal Code	T5K 5Y3

### **Amenities**

Amenities	Exercise Room, No Animal Home, No Smoking Home, Patio, Pool-Indoor, Recreation Room/Centre, Social Rooms
Parking Spaces	1
Parking	Stall
Is Waterfront	Yes
Has Pool	Yes

### **Interior**

Interior Features	ensuite bathroom
Appliances	Dishwasher-Built-In, Dryer, Hood Fan, Refrigerator, Stove-Electric, Washer, Window Coverings
Heating	Hot Water, Natural Gas
Fireplace	Yes
Fireplaces	Mantel, Tile Surround
# of Stories	4
Stories	1
Has Basement	Yes
Basement	None, No Basement

### **Exterior**

Exterior	Wood, Asphalt, Stucco
Exterior Features	Backs Onto Lake, Fenced, Lake Access Property, No Through Road, Treed Lot, View Lake
Roof	Asphalt Shingles
Construction	Wood, Asphalt, Stucco

Foundation Concrete Perimeter

### **Additional Information**

Date Listed February 12th, 2025

Days on Market 52

Zoning Zone 27

Condo Fee \$569

DATA IS DEEMED RELIABLE BUT IS NOT GUARANTEED ACCURATE BY THE REALTORS® ASSOCIATION OF EDMONTON. COPYRIGHT 2025 BY THE REALTORS® ASSOCIATION OF EDMONTON. ALL RIGHTS RESERVED. Trademarks are owned or controlled by the Canadian Real Estate Association (CREA) and identify real estate professionals who are members of CREA (REALTOR®, REALTORS®) and/or the quality of services they provide (MLS®, Multiple Listing Service®)

Listing information last updated on April 5th, 2025 at 12:32am MDT