

Courtesy Of Jennifer DiPietra Of RE/MAX Real Estate

\$699,000 - 174 Caledon Crescent, Spruce Grove

MLS® #E4421563

\$699,000

3 Bedroom, 4.00 Bathroom, 2,367 sqft
Single Family on 0.00 Acres

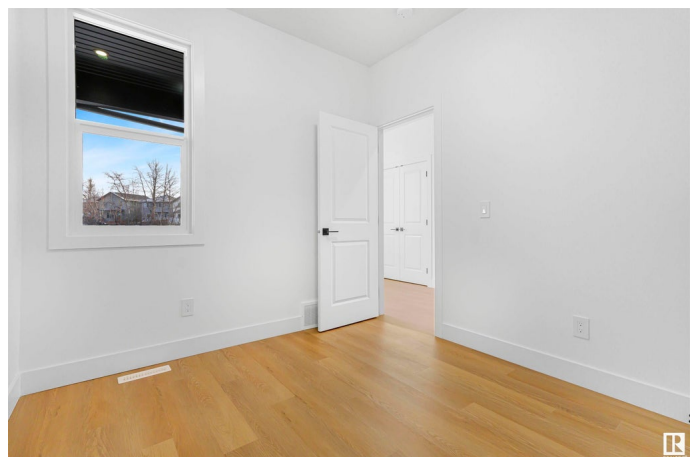
Copperhaven, Spruce Grove, AB

Welcome to modern living in the highly desirable Copperhaven community. This brand new construction is nearly 2400 square feet of above-grade living space crafted by a renowned builder. The main floor is spacious with a living room, a great room with soaring ceilings, large entertainers kitchen plus spice kitchen, dining space & den. Upstairs has 3 generous bedrooms, laundry, plus bonus room. The basement is a partial walk out & has a separate entrance—ideal for rental income, multi-generational living, or a private guest suite. The garage is 500 square feet with a drain & easy to heat. The lot is 4500 square ft & backs directly onto a serene pond. Enjoy tranquil views & natural privacy every day. With a design that invites personalization, now it's the time to choose your colours and fine-tune the floor plan to reflect your style. Customize and make this one truly yours! Pictures are not of this home, but are of a recent build by the builder showing level of finishes. Build will take approximately 6 months.

Built in 2025

Essential Information

MLS® #	E4421563
Price	\$699,000



Bedrooms	3
Bathrooms	4.00
Full Baths	4
Square Footage	2,367
Acres	0.00
Year Built	2025
Type	Single Family
Sub-Type	Detached Single Family
Style	2 Storey
Status	Active

Community Information

Address	174 Caledon Crescent
Area	Spruce Grove
Subdivision	Copperhaven
City	Spruce Grove
County	ALBERTA
Province	AB
Postal Code	T7X 0Y6

Amenities

Amenities	On Street Parking, No Animal Home, No Smoking Home
Parking	Double Garage Attached

Interior

Interior Features	ensuite bathroom
Appliances	Dishwasher-Built-In, Dryer, Refrigerator, Stove-Gas, Washer
Heating	Forced Air-1, Natural Gas
Fireplace	Yes
Fireplaces	Insert
Stories	2
Has Basement	Yes
Basement	Full, Unfinished

Exterior

Exterior	Wood, Vinyl, Hardie Board Siding
Exterior Features	Backs Onto Park/Trees, Private Setting, Schools, Shopping Nearby
Roof	Asphalt Shingles
Construction	Wood, Vinyl, Hardie Board Siding

Foundation Concrete Perimeter

Additional Information

Date Listed February 14th, 2025

Days on Market 57

Zoning Zone 91

DATA IS DEEMED RELIABLE BUT IS NOT GUARANTEED ACCURATE BY THE REALTORS® ASSOCIATION OF EDMONTON. COPYRIGHT 2025 BY THE REALTORS® ASSOCIATION OF EDMONTON. ALL RIGHTS RESERVED. Trademarks are owned or controlled by the Canadian Real Estate Association (CREA) and identify real estate professionals who are members of CREA (REALTOR®, REALTORS®) and/or the quality of services they provide (MLS®, Multiple Listing Service®)

Listing information last updated on April 11th, 2025 at 11:47pm MDT