

## \$339,900 - 57 50 McLaughlin Drive, Spruce Grove

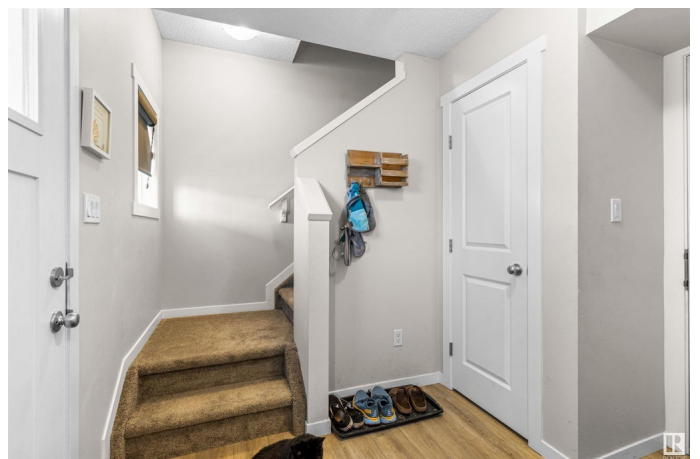
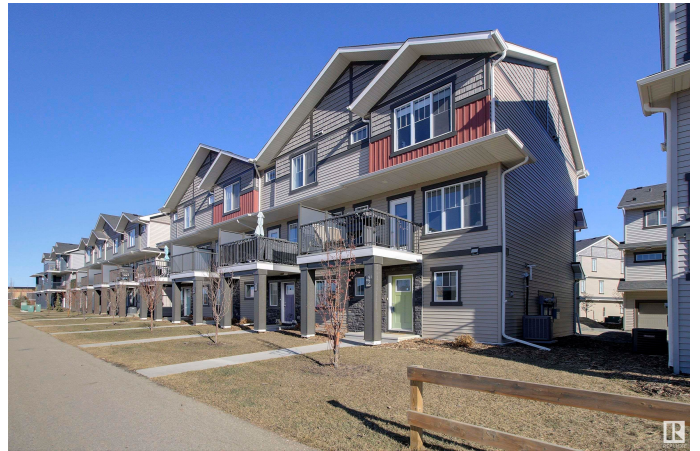
MLS® #E4424643

**\$339,900**

3 Bedroom, 2.50 Bathroom, 1,349 sqft  
Condo / Townhouse on 0.00 Acres

McLaughlin\_SPGR, Spruce Grove, AB

Built by StreetSide Developments, this stunning home is located in one of Spruce Grove's premier communities—McLaughlin. The main floor welcomes you with a spacious foyer, a convenient laundry area. The second floor features an open-concept layout with upgraded luxury vinyl plank flooring throughout the great room and kitchen. The beautifully designed kitchen is highlighted by upgraded cabinetry, Quartz countertops, stainless steel appliances, and a stylish tile backsplash. A convenient 2-piece bathroom completes this level. Upstairs, you'll find three spacious bedrooms. Upstairs, you'll find three spacious bedrooms, including a primary suite with a walk-in closet and a private 4-piece ensuite. An additional full bathroom serves the remaining two bedrooms, providing ample space for comfortable living. Comes with front yard landscaping and a double attached garage, this opportunity is perfect for a young family or young couple. Great location near shopping, bus routes.



Built in 2021

### Essential Information

MLS® # E4424643

Price \$339,900

Bedrooms	3
Bathrooms	2.50
Full Baths	2
Half Baths	1
Square Footage	1,349
Acres	0.00
Year Built	2021
Type	Condo / Townhouse
Sub-Type	Townhouse
Style	2 Storey
Status	Active

### Community Information

Address	57 50 McLaughlin Drive
Area	Spruce Grove
Subdivision	McLaughlin_SPGR
City	Spruce Grove
County	ALBERTA
Province	AB
Postal Code	T7X 0E1

### Amenities

Amenities	Deck, No Smoking Home
Parking	Double Garage Attached

### Interior

Interior Features	ensuite bathroom
Appliances	Dishwasher-Built-In, Microwave Hood Fan, Refrigerator, Stacked Washer/Dryer, Stove-Electric
Heating	Forced Air-1, Natural Gas
Stories	2
Has Basement	Yes
Basement	None, No Basement

### Exterior

Exterior	Wood, Vinyl
Exterior Features	Landscaped, Schools, Shopping Nearby, Partially Fenced
Roof	Asphalt Shingles
Construction	Wood, Vinyl

Foundation            Concrete Perimeter

### **Additional Information**

Date Listed            March 7th, 2025

Days on Market      34

Zoning                Zone 91

Condo Fee            \$175

DATA IS DEEMED RELIABLE BUT IS NOT GUARANTEED ACCURATE BY THE REALTORS® ASSOCIATION OF EDMONTON. COPYRIGHT 2025 BY THE REALTORS® ASSOCIATION OF EDMONTON. ALL RIGHTS RESERVED. Trademarks are owned or controlled by the Canadian Real Estate Association (CREA) and identify real estate professionals who are members of CREA (REALTOR®, REALTORS®) and/or the quality of services they provide (MLS®, Multiple Listing Service®)

Listing information last updated on April 10th, 2025 at 12:47am MDT