

\$249,900 - 202 11820 22 Avenue, Edmonton

MLS® #E4426671

\$249,900

2 Bedroom, 2.00 Bathroom, 967 sqft
Condo / Townhouse on 0.00 Acres

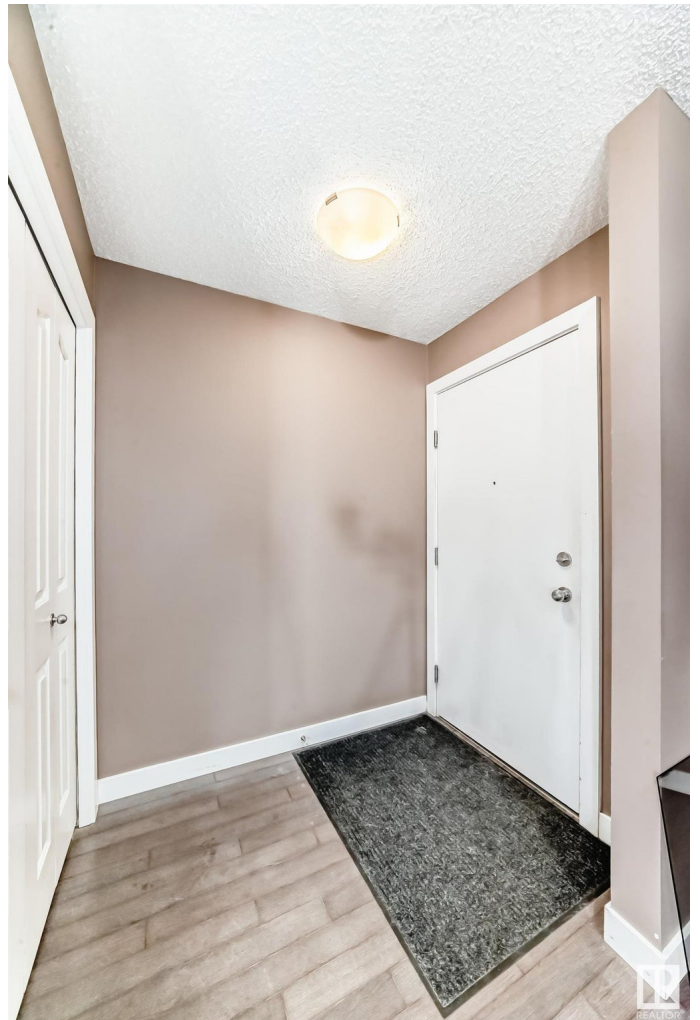
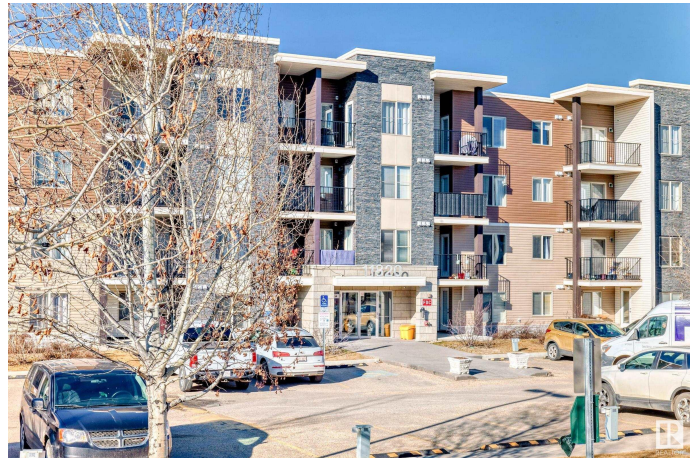
Rutherford (Edmonton), Edmonton, AB

Check out this bright and airy 967 sqft second-floor corner unit! This 2-bedroom, 2 full bath apartment features an open floor plan with a spacious entryway and den area—perfect for a home office or extra storage. Enjoy the natural light from the south-facing balcony, and the convenience of two parking spots—one surface stall just outside the unit and one in the heated underground parking garage. The building also offers elevator access. Whether you're looking for your next home or a great investment property, this one checks all the boxes!

Built in 2011

Essential Information

MLS® #	E4426671
Price	\$249,900
Bedrooms	2
Bathrooms	2.00
Full Baths	2
Square Footage	967
Acres	0.00
Year Built	2011
Type	Condo / Townhouse
Sub-Type	Lowrise Apartment
Style	Single Level Apartment



Status Active

Community Information

Address 202 11820 22 Avenue
Area Edmonton
Subdivision Rutherford (Edmonton)
City Edmonton
County ALBERTA
Province AB
Postal Code T6W 2A2

Amenities

Amenities Detectors Smoke
Parking Stall, Underground, See Remarks

Interior

Interior Features ensuite bathroom
Appliances Dishwasher-Built-In, Dryer, Garage Control, Microwave Hood Fan, Refrigerator, Stove-Electric, Washer
Heating Hot Water, Natural Gas
of Stories 4
Stories 1
Has Basement Yes
Basement None, No Basement

Exterior

Exterior Wood, Vinyl
Exterior Features Playground Nearby, Public Transportation, Schools, Shopping Nearby, See Remarks
Roof Asphalt Shingles
Construction Wood, Vinyl
Foundation Concrete Perimeter

Additional Information

Date Listed March 20th, 2025
Days on Market 29
Zoning Zone 55
Condo Fee \$478

DATA IS DEEMED RELIABLE BUT IS NOT GUARANTEED ACCURATE BY THE REALTORS® ASSOCIATION OF EDMONTON. COPYRIGHT 2025 BY THE REALTORS® ASSOCIATION OF EDMONTON. ALL RIGHTS

RESERVED. Trademarks are owned or controlled by the Canadian Real Estate Association (CREA) and identify real estate professionals who are members of CREA (REALTOR®®, REALTORS®®) and/or the quality of services they provide (MLS®®, Multiple Listing Service®®)

Listing information last updated on April 18th, 2025 at 9:47am MDT