

# \$378,000 - 10 1850 Mill Woods, Edmonton

MLS® #E4427573

**\$378,000**

3 Bedroom, 2.50 Bathroom, 1,006 sqft  
Condo / Townhouse on 0.00 Acres

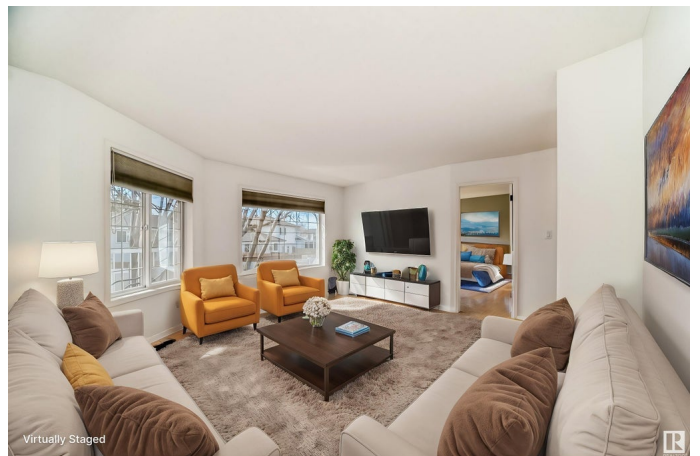
Pollard Meadows, Edmonton, AB

ADULT GATED and Newly renovated DUPLEX (min 45 plus age) bungalow in Pollard Meadows, Millwoods. Double attached garage with inside entrance. Kitchen area has been enlarged to create more cabinets and counter space. The dining area leads out to a large deck and access to visitor parking which is handy. Main floor living room is a great size with plenty of options on layout for your furniture. Main floor laundry, 2 bedrooms, full bathroom and a 2 piece bath ensuite off the primary bedroom. Head downstairs to find a 3rd good size bedroom, attached 3 piece bath with two entrances, a beautiful family room, a few storage rooms and a good workshop or craft room. Pets are permitted with board approval and no size is listed in the bylaws. Great community for your new Chapter in Life!

Built in 1998

## Essential Information

MLS® #	E4427573
Price	\$378,000
Bedrooms	3
Bathrooms	2.50
Full Baths	2
Half Baths	1
Square Footage	1,006
Acres	0.00



Year Built	1998
Type	Condo / Townhouse
Sub-Type	Half Duplex
Style	Bungalow
Status	Active

### **Community Information**

Address	10 1850 Mill Woods
Area	Edmonton
Subdivision	Pollard Meadows
City	Edmonton
County	ALBERTA
Province	AB
Postal Code	T6L 7C6

### **Amenities**

Amenities	Deck, No Animal Home, No Smoking Home, Parking-Visitor
Parking Spaces	4
Parking	Double Garage Attached

### **Interior**

Interior Features	ensuite bathroom
Appliances	Dishwasher-Built-In, Dryer, Oven-Microwave, Refrigerator, Stove-Electric, Washer
Heating	Forced Air-1, Natural Gas
Stories	2
Has Basement	Yes
Basement	Full, Finished

### **Exterior**

Exterior	Wood, Vinyl
Exterior Features	Schools, Shopping Nearby
Roof	Asphalt Shingles
Construction	Wood, Vinyl
Foundation	Concrete Perimeter

### **Additional Information**

Date Listed	March 25th, 2025
Days on Market	10

Zoning	Zone 29
Condo Fee	\$405

DATA IS DEEMED RELIABLE BUT IS NOT GUARANTEED ACCURATE BY THE REALTORS® ASSOCIATION OF EDMONTON. COPYRIGHT 2025 BY THE REALTORS® ASSOCIATION OF EDMONTON. ALL RIGHTS RESERVED. Trademarks are owned or controlled by the Canadian Real Estate Association (CREA) and identify real estate professionals who are members of CREA (REALTOR®, REALTORS®) and/or the quality of services they provide (MLS®, Multiple Listing Service®)

Listing information last updated on April 4th, 2025 at 1:32am MDT