

Courtesy Of Douglas B Purdy Of RE/MAX River City

\$240,000 - 102 13111 140 Avenue, Edmonton

MLS® #E4427794

\$240,000

2 Bedroom, 2.00 Bathroom, 961 sqft
Condo / Townhouse on 0.00 Acres

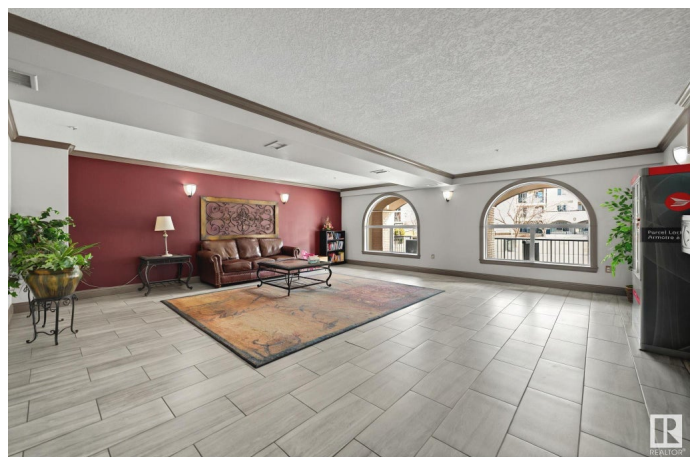
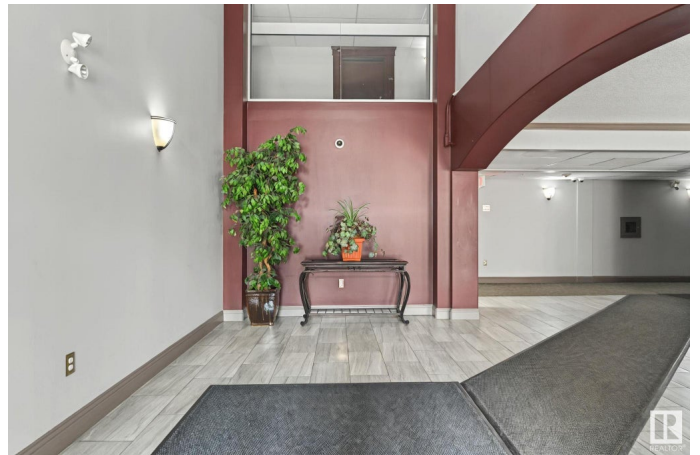
Pembina, Edmonton, AB

Welcome to Palisades Park Villas! This beautifully renovated 2-bed, 2-bath condo offers stylish living in northwest Edmonton. Priced at \$240,000, Unit #102 features brand-new countertops, cabinets & flooring, plus central A/C, in-suite laundry & heated underground parking. Bonus: All furnishings are available for purchase—just move right in! Located steps from shopping, dining, transit & with quick access to Yellowhead Trail & Anthony Henday, this condo blends comfort & convenience. Whether you're buying your first home or looking to downsize, this one checks all the boxes.

Built in 2005

Essential Information

MLS® #	E4427794
Price	\$240,000
Bedrooms	2
Bathrooms	2.00
Full Baths	2
Square Footage	961
Acres	0.00
Year Built	2005
Type	Condo / Townhouse
Sub-Type	Lowrise Apartment
Style	Single Level Apartment



Status Active

Community Information

Address 102 13111 140 Avenue
Area Edmonton
Subdivision Pembina
City Edmonton
County ALBERTA
Province AB
Postal Code T6V 0B1

Amenities

Amenities Off Street Parking, Air Conditioner, Deck, Detectors Smoke, Gazebo, Intercom, No Animal Home, No Smoking Home, Parking-Visitor, Sprinkler System-Fire, Natural Gas BBQ Hookup
Parking Heated, Underground

Interior

Interior Features ensuite bathroom
Appliances Air Conditioning-Central, Dishwasher-Built-In, Euro Washer/Dryer Combo, Furniture Included, Garage Opener, Microwave Hood Fan, Refrigerator-Energy Star, Stove-Electric, Window Coverings, Curtains and Blinds
Heating Fan Coil, Forced Air-1, Natural Gas
of Stories 4
Stories 1
Has Basement Yes
Basement None, No Basement

Exterior

Exterior Wood, Stone, Stucco
Exterior Features Fenced, Golf Nearby, Landscaped, No Back Lane, No Through Road, Playground Nearby, Public Transportation, Schools, Shopping Nearby
Roof Asphalt Shingles
Construction Wood, Stone, Stucco
Foundation Concrete Perimeter

School Information

Elementary McArthur School
Middle Sir John Thompson

High Rosslyn School

Additional Information

Date Listed March 27th, 2025

Days on Market 8

Zoning Zone 27

Condo Fee \$485

DATA IS DEEMED RELIABLE BUT IS NOT GUARANTEED ACCURATE BY THE REALTORS® ASSOCIATION OF EDMONTON. COPYRIGHT 2025 BY THE REALTORS® ASSOCIATION OF EDMONTON. ALL RIGHTS RESERVED. Trademarks are owned or controlled by the Canadian Real Estate Association (CREA) and identify real estate professionals who are members of CREA (REALTOR®, REALTORS®) and/or the quality of services they provide (MLS®, Multiple Listing Service®)

Listing information last updated on April 4th, 2025 at 12:32pm MDT