

Courtesy Of Sally Munro Of Century 21 Masters

\$669,900 - 603 Adams Way, Edmonton

MLS® #E4428700

\$669,900

3 Bedroom, 2.50 Bathroom, 2,386 sqft
Single Family on 0.00 Acres

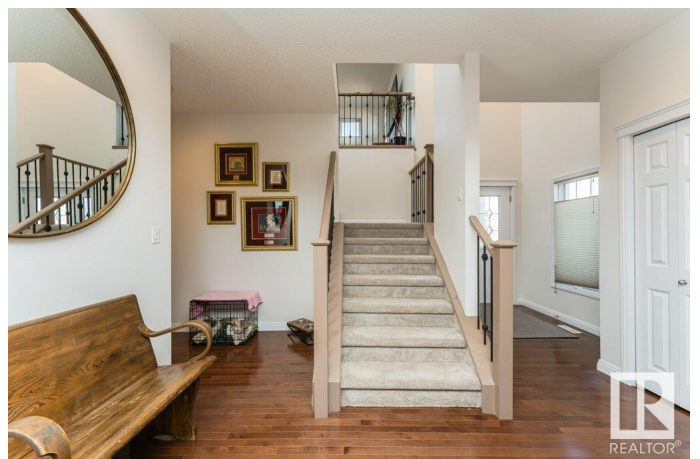
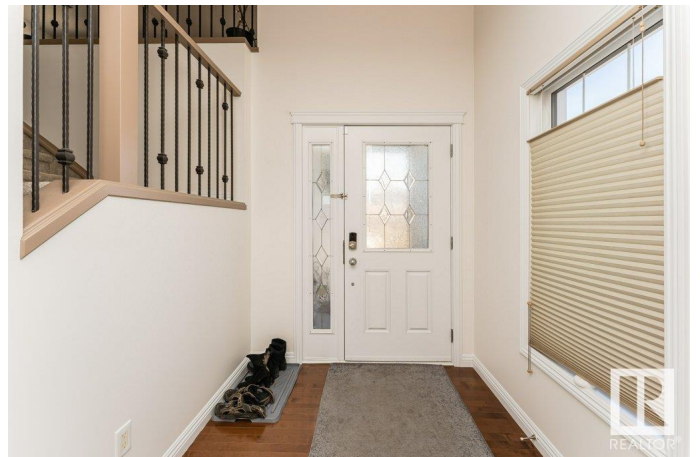
Ambleside, Edmonton, AB

Beautiful two storey 3 bedrooms and 3 bathrooms with 2,386 sq. ft. in the family friendly community of Ambleside. Main floor has a very large foyer with an open concept great room. Stunning hardwood throughout the main floor. A dream kitchen with granite countertops, stainless steel appliances and a large walk in pantry. The dining area provides access to the backyard and deck. The living room has a built-in entertainment shelving unit and a cozy gas fireplace;. Upstairs there is a huge bonus room, laundry room, 3 bedrooms and 2 bathrooms. The primary bedroom is huge and comes with a large ensuite and walk in closet. This home is very energy efficient with a high efficiency furnace, hot water on-demand, and upgraded insulation. Recent upgrades include new paint and new flooring. 9 foot ceilings. Huge corner lot with large back yard. Excellent access to the Anthony Henday, airport, shopping and schools. Make the move today to this fantastic family home.

Built in 2008

Essential Information

MLS® #	E4428700
Price	\$669,900
Bedrooms	3



Bathrooms	2.50
Full Baths	2
Half Baths	1
Square Footage	2,386
Acres	0.00
Year Built	2008
Type	Single Family
Sub-Type	Detached Single Family
Style	2 Storey
Status	Active

Community Information

Address	603 Adams Way
Area	Edmonton
Subdivision	Ambleside
City	Edmonton
County	ALBERTA
Province	AB
Postal Code	T6W 0H1

Amenities

Amenities	Ceiling 9 ft., Deck
Parking Spaces	4
Parking	Double Garage Attached

Interior

Interior Features	ensuite bathroom
Appliances	Dishwasher-Built-In, Dryer, Garage Control, Garage Opener, Hood Fan, Refrigerator, Stove-Electric, Washer, Window Coverings
Heating	Forced Air-1, Natural Gas
Fireplace	Yes
Fireplaces	Mantel
Stories	2
Has Basement	Yes
Basement	Full, Unfinished

Exterior

Exterior	Wood, Composition, Stone
Exterior Features	Corner Lot, Cross Fenced, Landscaped, Low Maintenance Landscape,

Playground Nearby, Public Transportation, Schools, Shopping Nearby

Roof Asphalt Shingles
Construction Wood, Composition, Stone
Foundation Concrete Perimeter

School Information

Elementary Dr. Margaret-Ann Armour
Middle St.John XXIII School
High Lillian Osborne

Additional Information

Date Listed April 2nd, 2025
Days on Market 8
Zoning Zone 56
HOA Fees 100
HOA Fees Freq. Annually

DATA IS DEEMED RELIABLE BUT IS NOT GUARANTEED ACCURATE BY THE REALTORS® ASSOCIATION OF EDMONTON. COPYRIGHT 2025 BY THE REALTORS® ASSOCIATION OF EDMONTON. ALL RIGHTS RESERVED. Trademarks are owned or controlled by the Canadian Real Estate Association (CREA) and identify real estate professionals who are members of CREA (REALTOR®, REALTORS®) and/or the quality of services they provide (MLS®, Multiple Listing Service®)

Listing information last updated on April 10th, 2025 at 1:02am MDT