

Courtesy Of Arvin Guillermo Of Exp Realty

# \$139,900 - 4 14110 80 Street, Edmonton

MLS® #E4429026

**\$139,900**

3 Bedroom, 1.00 Bathroom, 929 sqft  
Condo / Townhouse on 0.00 Acres

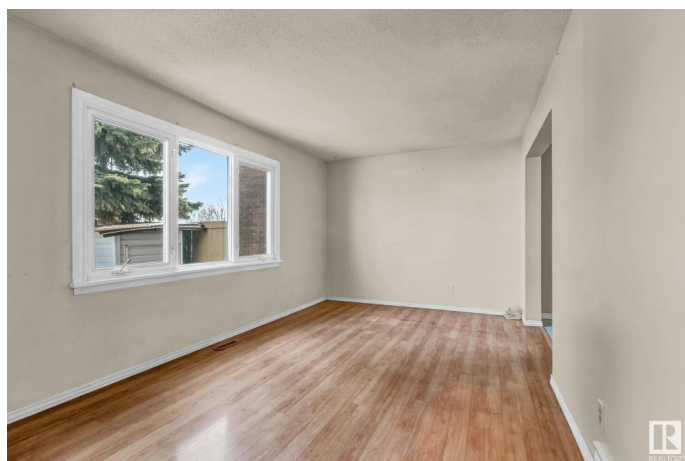
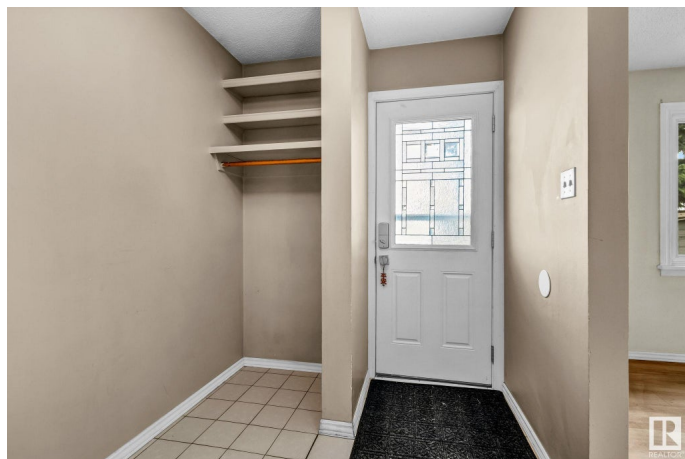
Kildare, Edmonton, AB

Welcome home to this charming and affordable 3-bedroom townhouse, ideal for first-time buyers, young couples, or small families. Tucked away in a quiet, family-friendly neighborhood, you're just minutes from Londonderry Mall, Northgate Centre, NAIT, schools, parks, and easy access to Yellowhead Trail. Inside, you'll find a bright and inviting layout with a spacious living area perfect for relaxing or hosting friends. The kitchen offers plenty of cabinet space and flows into a cozy dining nook. Upstairs, three comfortable bedrooms provide room to grow. The unfinished basement is full of potential—create your dream rec room, home gym, or hobby space. Outside, enjoy a low-maintenance front yard, one dedicated parking stall, and lots of street parking for guests. If you're searching for the perfect mix of value, space, and convenience, this home checks all the boxes.

Built in 1971

## Essential Information

MLS® #	E4429026
Price	\$139,900
Bedrooms	3
Bathrooms	1.00
Full Baths	1



Square Footage	929
Acres	0.00
Year Built	1971
Type	Condo / Townhouse
Sub-Type	Townhouse
Style	2 Storey
Status	Active

### **Community Information**

Address	4 14110 80 Street
Area	Edmonton
Subdivision	Kildare
City	Edmonton
County	ALBERTA
Province	AB
Postal Code	T5C 1L6

### **Amenities**

Amenities	On Street Parking, No Animal Home, No Smoking Home
Parking	Stall

### **Interior**

Appliances	Dryer, Hood Fan, Refrigerator, Storage Shed, Stove-Electric, Washer, Window Coverings
Heating	Forced Air-1, Natural Gas
Stories	2
Has Basement	Yes
Basement	Full, Unfinished

### **Exterior**

Exterior	Wood, Stucco, Vinyl
Exterior Features	Fenced, Flat Site, Low Maintenance Landscape, Playground Nearby, Public Transportation, Schools, Shopping Nearby
Roof	Asphalt Shingles
Construction	Wood, Stucco, Vinyl
Foundation	Concrete Perimeter

### **Additional Information**

Date Listed	April 4th, 2025
-------------	-----------------

Days on Market	1
Zoning	Zone 02
Condo Fee	\$373

DATA IS DEEMED RELIABLE BUT IS NOT GUARANTEED ACCURATE BY THE REALTORS® ASSOCIATION OF EDMONTON. COPYRIGHT 2025 BY THE REALTORS® ASSOCIATION OF EDMONTON. ALL RIGHTS RESERVED. Trademarks are owned or controlled by the Canadian Real Estate Association (CREA) and identify real estate professionals who are members of CREA (REALTOR®, REALTORS®) and/or the quality of services they provide (MLS®, Multiple Listing Service®)

Listing information last updated on April 5th, 2025 at 1:02am MDT