

\$354,800 - 19 5317 3 Avenue, Edmonton

MLS® #E4429820

\$354,800

3 Bedroom, 2.50 Bathroom, 1,323 sqft
Condo / Townhouse on 0.00 Acres

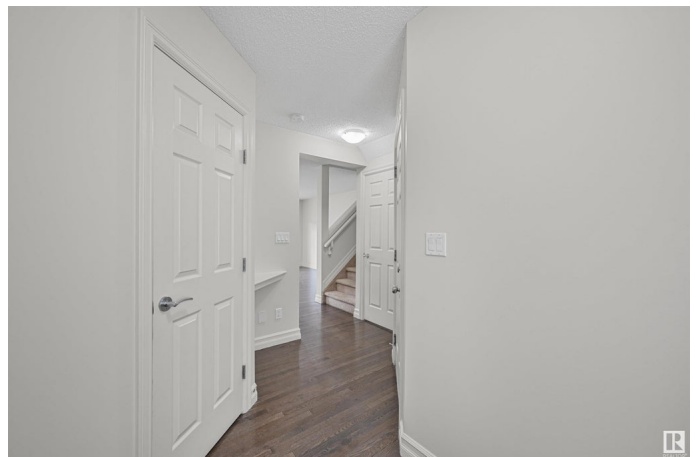
Charlesworth, Edmonton, AB

One look will do! Welcome home to this wonderful freshly painted half duplex. The open floor plan features a spacious main floor with hardwood floors. As soon as you enter you are greeted by a large entrance and a 2-piece main bath. The kitchen has a large island, plenty of cabinets, Black appliances and a corner pantry. The dining area features sliding doors to the deck and backyard. Bright and spacious living room has pot lights. Upstairs has 3 bedrooms with the primary bedroom that holds a king-size bed & a 3 piece ensuite, the other 2 bedrooms can hold queen beds, the 4 piece bathroom has lots of counter space and completing this floor is your laundry room. Located close to all amenities. A must to see!!

Built in 2013

Essential Information

MLS® #	E4429820
Price	\$354,800
Bedrooms	3
Bathrooms	2.50
Full Baths	2
Half Baths	1
Square Footage	1,323
Acres	0.00



Year Built	2013
Type	Condo / Townhouse
Sub-Type	Half Duplex
Style	2 Storey
Status	Active

Community Information

Address	19 5317 3 Avenue
Area	Edmonton
Subdivision	Charlesworth
City	Edmonton
County	ALBERTA
Province	AB
Postal Code	T6X 0W7

Amenities

Amenities	Deck, Detectors Smoke
Parking	Single Garage Attached

Interior

Interior Features	ensuite bathroom
Appliances	Dishwasher-Built-In, Dryer, Garage Control, Garage Opener, Refrigerator, Stove-Electric, Washer
Heating	Forced Air-1, Natural Gas
Stories	2
Has Basement	Yes
Basement	Full, Unfinished

Exterior

Exterior	Wood, Vinyl
Exterior Features	Fenced, Public Transportation, Schools, Shopping Nearby
Roof	Asphalt Shingles
Construction	Wood, Vinyl
Foundation	Concrete Perimeter

School Information

Elementary	CorpusChristi/EllerslieCam
Middle	CorpusChristi/EllerslieCam
High	HolyTrinity/ElderDrFrancis

Additional Information

Date Listed	April 9th, 2025
Days on Market	14
Zoning	Zone 53
Condo Fee	\$240

DATA IS DEEMED RELIABLE BUT IS NOT GUARANTEED ACCURATE BY THE REALTORS® ASSOCIATION OF EDMONTON. COPYRIGHT 2025 BY THE REALTORS® ASSOCIATION OF EDMONTON. ALL RIGHTS RESERVED. Trademarks are owned or controlled by the Canadian Real Estate Association (CREA) and identify real estate professionals who are members of CREA (REALTOR®, REALTORS®) and/or the quality of services they provide (MLS®, Multiple Listing Service®)

Listing information last updated on April 23rd, 2025 at 1:02pm MDT