

\$275,000 - 407 10118 95 Street, Edmonton

MLS® #E4430625

\$275,000

2 Bedroom, 2.00 Bathroom, 1,035 sqft
Condo / Townhouse on 0.00 Acres

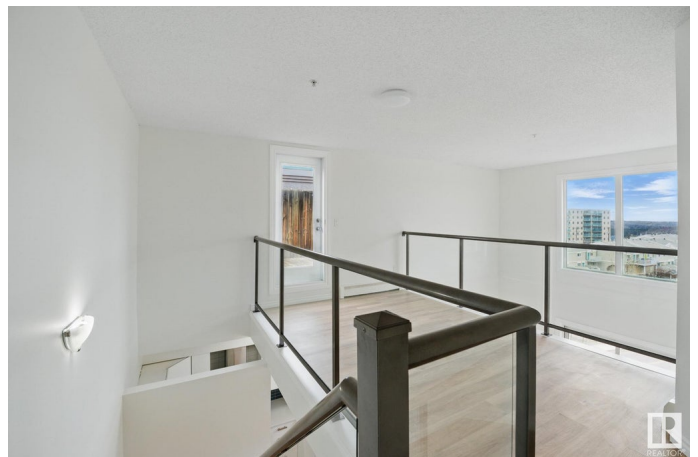
Boyle Street, Edmonton, AB

Welcome to this STUNNING LOFT STYLE PENTHOUSE in downtown Edmonton. This top-floor unit offers 2 bedrooms, 2 full bathrooms, 2 TITLED PARKING STALLS (1 u/g, 1 surface), a PRIVATE ROOFTOP PATIO, balcony, and beautiful River Valley views from every corner. Inside, you'll find soaring ceilings, an open-concept layout, and large windows that fill the space with natural light. The interior has been fully updated with brand new LVP flooring, stone countertops, stainless steel appliances, and a sleek glass railing. The bedrooms are thoughtfully placed on opposite sides of the home for added privacy. The spacious primary suite features a walkthrough closet and a private ensuite for convenience. Upstairs, the loft offers a flexible space with endless possibilities. Enjoy the outdoors on your own rooftop patio or balcony that includes a gas line for easy barbecuing. Centrally located, you're just minutes from the LRT, River Valley trails, restaurants, shopping, and more. This is peak urban living!

Built in 2004

Essential Information

MLS® #	E4430625
Price	\$275,000
Bedrooms	2



Bathrooms	2.00
Full Baths	2
Square Footage	1,035
Acres	0.00
Year Built	2004
Type	Condo / Townhouse
Sub-Type	Lowrise Apartment
Style	Multi Level Apartment
Status	Active

Community Information

Address	407 10118 95 Street
Area	Edmonton
Subdivision	Boyle Street
City	Edmonton
County	ALBERTA
Province	AB
Postal Code	T5H 4R6

Amenities

Amenities	Ceiling 10 ft., No Animal Home, No Smoking Home, Parking-Extra, Parking-Visitor, Secured Parking, Security Door, Natural Gas BBQ Hookup, Rooftop Deck/Patio
Parking	Heated, Parkade, Stall, Underground

Interior

Interior Features	ensuite bathroom
Appliances	Dishwasher-Built-In, Dryer, Hood Fan, Refrigerator, Stove-Electric, Washer
Heating	Baseboard, Water
# of Stories	4
Stories	2
Has Basement	Yes
Basement	None, No Basement

Exterior

Exterior	Wood, Stucco
Exterior Features	Low Maintenance Landscape, River Valley View, River View, Shopping Nearby, View City, View Downtown

Roof	Asphalt Shingles
Construction	Wood, Stucco
Foundation	Concrete Perimeter

Additional Information

Date Listed	April 12th, 2025
Days on Market	9
Zoning	Zone 13
Condo Fee	\$625

DATA IS DEEMED RELIABLE BUT IS NOT GUARANTEED ACCURATE BY THE REALTORS® ASSOCIATION OF EDMONTON. COPYRIGHT 2025 BY THE REALTORS® ASSOCIATION OF EDMONTON. ALL RIGHTS RESERVED. Trademarks are owned or controlled by the Canadian Real Estate Association (CREA) and identify real estate professionals who are members of CREA (REALTOR®, REALTORS®) and/or the quality of services they provide (MLS®, Multiple Listing Service®)

Listing information last updated on April 21st, 2025 at 4:17pm MDT