

\$524,800 - 8 Pembroke Crescent, St. Albert

MLS® #E4430987

\$524,800

4 Bedroom, 2.50 Bathroom, 1,273 sqft
Single Family on 0.00 Acres

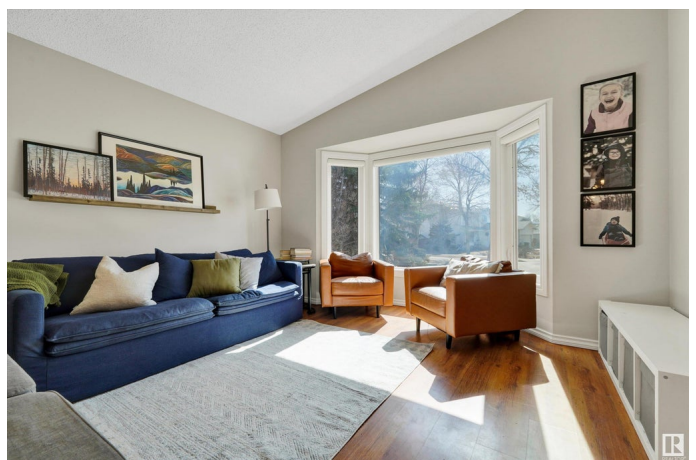
Pineview, St. Albert, AB

Welcome to 8 Pembroke Cres. â€” the quintessential family home in one of the most sought-after neighbourhoods! Situated on an expansive pie-shaped lot, this beautifully renovated home blends modern style with functionality. Step inside to a bright, open-concept main floor featuring vaulted ceilings & a spacious layout perfect for entertaining. The large, renovated kitchen offers abundant cabinetry, expansive countertops & plenty of room to gather. Upstairs, the primary bdrm is generously sized w/private ensuite, while 2 additional bdrms and a full bathroom provide comfortable space for the whole family. The fully finished bsmt adds incredible versatility, featuring a rec room, a full bathroom, an additional bdrm, more recreational space below & tons of storage. Donâ€™t forget about: landscaped yard w/2 tiered deck, dbl attached garage, A/C & much more! With extensive renovations throughout & located in an amazing community, this home has it ALL!

Built in 1987

Essential Information

MLS® #	E4430987
Price	\$524,800
Bedrooms	4



Bathrooms	2.50
Full Baths	2
Half Baths	1
Square Footage	1,273
Acres	0.00
Year Built	1987
Type	Single Family
Sub-Type	Detached Single Family
Style	4 Level Split
Status	Active

Community Information

Address	8 Pembroke Crescent
Area	St. Albert
Subdivision	Pineview
City	St. Albert
County	ALBERTA
Province	AB
Postal Code	T8N 4S1

Amenities

Amenities	Air Conditioner, Vaulted Ceiling
Parking Spaces	4
Parking	Double Garage Attached

Interior

Interior Features	ensuite bathroom
Appliances	Air Conditioning-Central, Dishwasher-Built-In, Dryer, Garage Control, Garage Opener, Microwave Hood Fan, Refrigerator, Stove-Electric, Washer, Window Coverings
Heating	Forced Air-1, Natural Gas
Fireplace	Yes
Fireplaces	Corner, Tile Surround
Stories	4
Has Basement	Yes
Basement	Full, Finished

Exterior

Exterior	Wood, Brick, Vinyl
----------	--------------------

Exterior Features	Fenced, Playground Nearby, Public Swimming Pool, Public Transportation, Schools, Shopping Nearby
Roof	Asphalt Shingles
Construction	Wood, Brick, Vinyl
Foundation	Concrete Perimeter

School Information

Elementary	MariePoburan Leo Nickerson
Middle	ESSMY, Lorne Akins
High	Paul Kane

Additional Information

Date Listed	April 15th, 2025
Days on Market	5
Zoning	Zone 24

DATA IS DEEMED RELIABLE BUT IS NOT GUARANTEED ACCURATE BY THE REALTORS® ASSOCIATION OF EDMONTON. COPYRIGHT 2025 BY THE REALTORS® ASSOCIATION OF EDMONTON. ALL RIGHTS RESERVED.Trademarks are owned or controlled by the Canadian Real Estate Association (CREA) and identify real estate professionals who are members of CREA (REALTOR®, REALTORS®) and/or the quality of services they provide (MLS®, Multiple Listing Service®)

Listing information last updated on April 20th, 2025 at 8:47pm MDT