

\$299,900 - 18416 95a Avenue, Edmonton

MLS® #E4431756

\$299,900

4 Bedroom, 2.00 Bathroom, 956 sqft

Single Family on 0.00 Acres

La Perle, Edmonton, AB

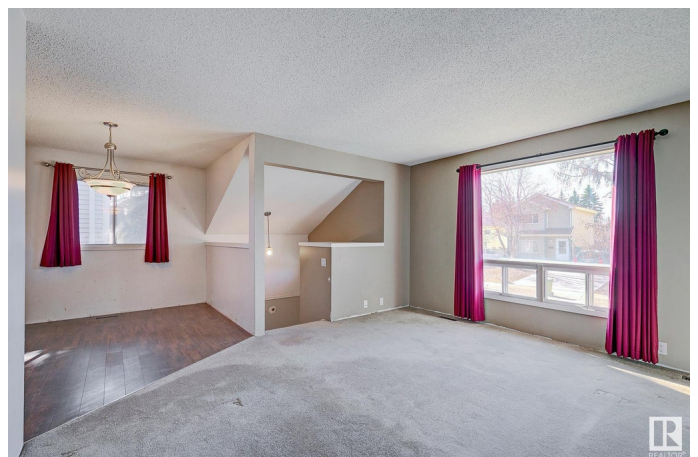
OPPORTUNITY! CUTE HOUSE! MASSIVE GARAGE! Charming 2+2 bedroom bi-level situated on a quiet street in the heart of LaPerle. Walking distance to schools, Park, soccer fields, rink & Community League. Conveniently located close to shopping & amenities. Main floor offers a functional open floor plan with generous size kitchen, adjacent dining area, spacious living room with bright south facing picture window plus 2 bedrooms and a 4pce bath. Basement has an additional 2 bedrooms with large windows, 3pce bath, recreation space and is complete with a dedicated laundry/storage room. The OVERSIZED garage is a mechanics dream with a high ceiling to accommodate a lift and plenty of room for tools and projects. The property has tons of potential and awaits your personal touches! Perfect for handy buyers, investors or anyone with a vision for transformation. CREATE something that is truly yours! Don't miss your chance to build sweat equity! Come take a look and imagine the possibilities!

Built in 1981

Essential Information

MLS® # E4431756

Price \$299,900



Bedrooms	4
Bathrooms	2.00
Full Baths	2
Square Footage	956
Acres	0.00
Year Built	1981
Type	Single Family
Sub-Type	Detached Single Family
Style	Bungalow
Status	Active

Community Information

Address	18416 95a Avenue
Area	Edmonton
Subdivision	La Perle
City	Edmonton
County	ALBERTA
Province	AB
Postal Code	T5T 3V8

Amenities

Amenities	No Animal Home, No Smoking Home
Parking	Double Garage Detached, Over Sized

Interior

Appliances	Dishwasher-Built-In, Dryer, Hood Fan, Refrigerator, Storage Shed, Stove-Electric, Washer, Window Coverings
Heating	Forced Air-1, Natural Gas
Stories	1
Has Basement	Yes
Basement	Full, Partially Finished

Exterior

Exterior	Wood, Metal
Exterior Features	Back Lane, Fenced, Landscaped, Playground Nearby, Public Transportation, Schools, Shopping Nearby
Roof	Asphalt Shingles
Construction	Wood, Metal
Foundation	Concrete Perimeter

Additional Information

Date Listed April 18th, 2025
Days on Market 1
Zoning Zone 20

DATA IS DEEMED RELIABLE BUT IS NOT GUARANTEED ACCURATE BY THE REALTORS® ASSOCIATION OF EDMONTON. COPYRIGHT 2025 BY THE REALTORS® ASSOCIATION OF EDMONTON. ALL RIGHTS RESERVED.Trademarks are owned or controlled by the Canadian Real Estate Association (CREA) and identify real estate professionals who are members of CREA (REALTOR®, REALTORS®) and/or the quality of services they provide (MLS®, Multiple Listing Service®)
Listing information last updated on April 19th, 2025 at 12:17pm MDT